

Create Invitations to Pet Club!



Use the invitation below to start your very own Pet Club—
one where all are welcome and no one is left behind.



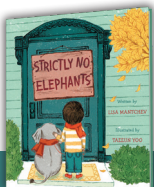
YOU'RE INVITED TO...PET CLUB!

To: _____ & _____
GUEST NAME PETS NAME*

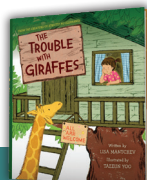
When: _____

Where: _____

From: _____ & _____
YOUR NAME PETS NAME*



**STRICTLY NO
ELEPHANTS**



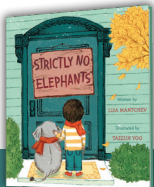
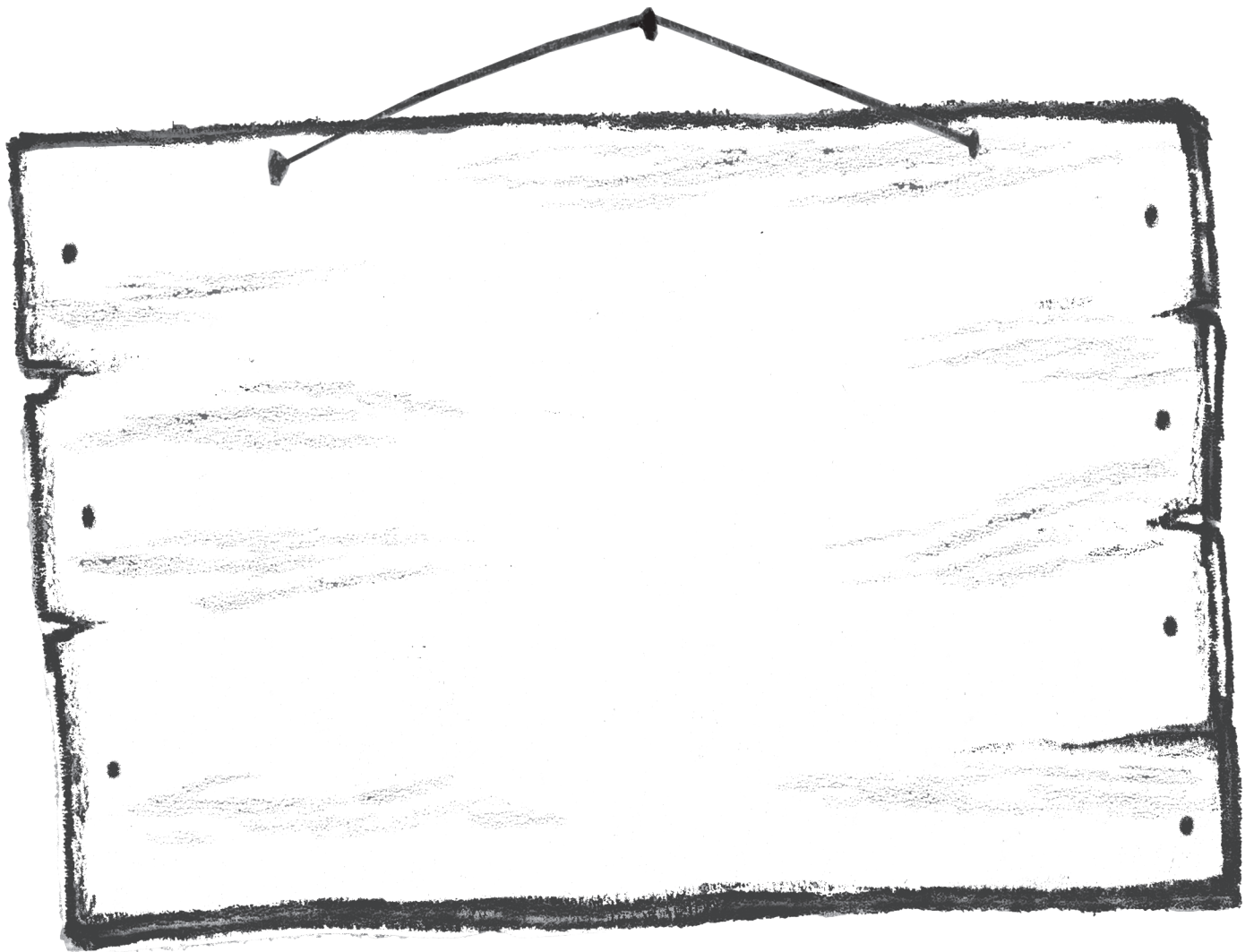
**THE TROUBLE
WITH GIRAFFES**

*If you don't have a pet, you can also invite an
imaginary one, plush toys, a friend, and more!

All Are Welcome!



Whether you're inviting new friends
or familiar faces, design your own
sign to welcome them in!



**STRICTLY NO
ELEPHANTS**



**THE TROUBLE
WITH GIRAFFES**

By Lisa Mantchev | Illustrated by Taeun Yoo

Illustrations © 2015/2025 by Taeun Yoo

REPRODUCIBLE

A PAULA WISEMAN BOOK

Meeting in the Middle!

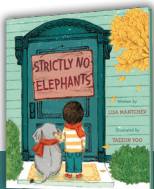


Despite our differences, we all have similarities and can find ways to meet in the middle. With a friend, write down things that you like on the left side. On the right side, write down things that your friend likes. Then, in the middle, think and write about what you both have in common!

I Like...

My Friend
Likes...

We Both
Like...



**STRICTLY NO
ELEPHANTS**



**THE TROUBLE
WITH GIRAFFES**

By Lisa Mantchev | Illustrated by Taeun Yoo

Illustrations © 2015/2025 by Taeun Yoo

REPRODUCIBLE

A PAULA WISEMAN BOOK